



# Graduate Destinations: 2016/17 UK First Degree Graduates

This report provides analysis of the 2016/17 DLHE HESA data published on 5th July 2018, and relevant recent performance in this area.

The Institution level performance relative to Scottish and Russell Group comparators (pages 1-4) and trends over time (pages 5-6) is provided. The latter part of the report looks at School level performance this year (pages 7-8), over time (pages 9-10) and at the experience of those from different domiciles (page 11). The addendum (pages 12-14) provides comparison of the quality of outcomes.

## 1. Performance Indicator (PI) Summary

The Performance Indicator is based on the percentage of full-time first degree UK domicile graduates in employment or further study, 6 months after graduation. The PI does not reflect the quality of outcomes. The quality of outcomes is addressed by looking at those entering Highly Skilled Employment and Further Study (HSEFS), and is addressed later in this report. Both figures feature as TEF metrics.

The data for 2016/17 gives the University of Edinburgh a result of **94.3%**, compared to a benchmark of 95.3%. This compares to a figure of 92.8% last year. Other key figures include:

- UK Average: 94.6%
- Russell Group: 94.7%
- Scottish Average: 95.3%

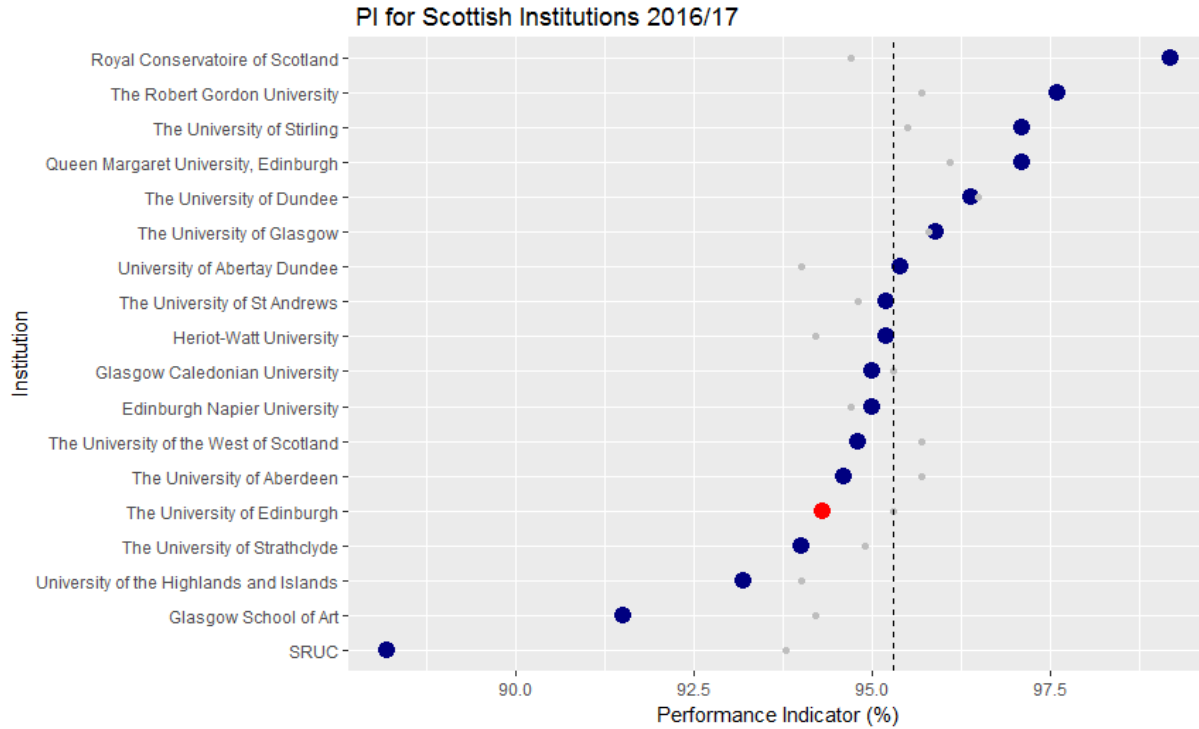
The main ranking comparisons are as follows:

- Overall rank: 81 of 164 (up 39 places on last year)
- Russell Group rank: =12 of 24 (up 9 places on last year)
- Scotland rank: 14 of 19 (up 3 places on last year)

## 2. Scotland

This section compares the 2016/17 PI for Scottish HEIs. The Scottish average is 95.3%.

The grey dots give the benchmark and the dotted line gives the Scottish average. The difference between the indicator and the benchmark is not statistically significant for any of the institutions in Scotland.



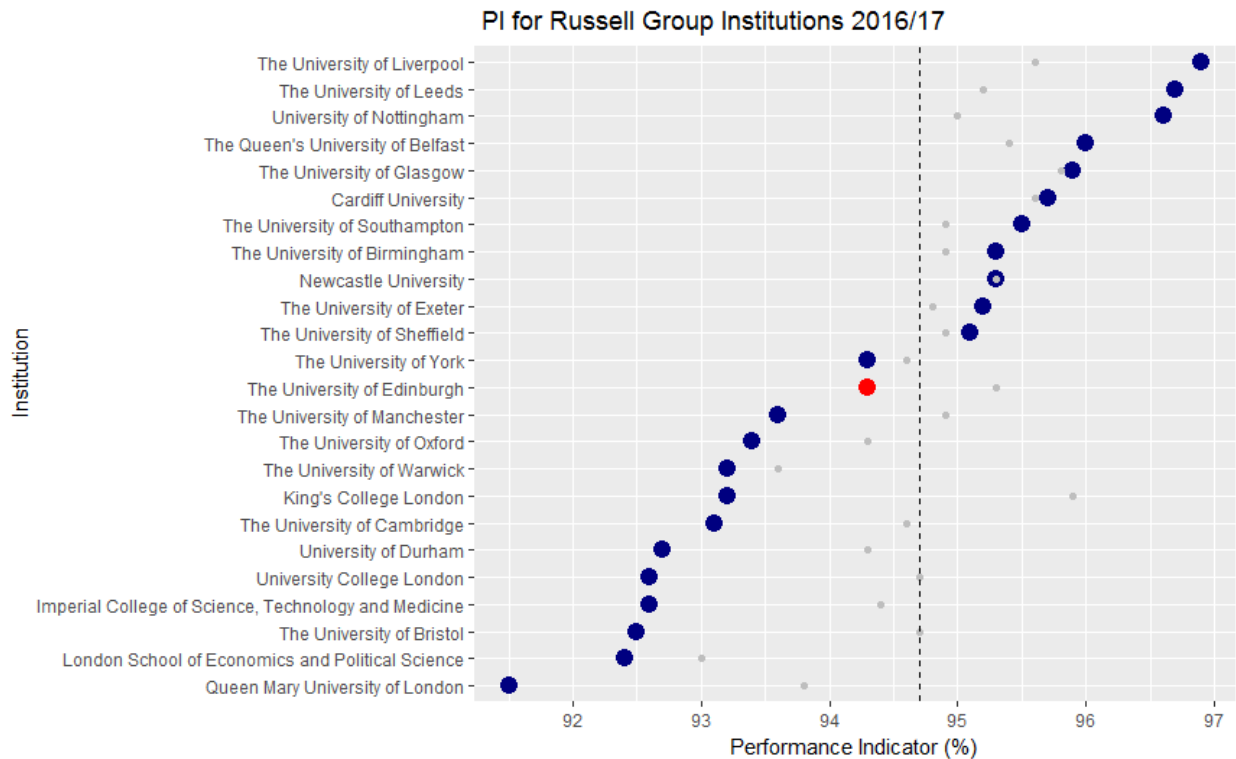
Rank	Provider	PI	Benchmark	Difference
1	Royal Conservatoire of Scotland	99.2	94.7	4.5
2	The Robert Gordon University	97.6	95.7	1.9
3	Queen Margaret University, Edinburgh	97.1	96.1	1.0
3	The University of Stirling	97.1	95.5	1.6
5	The University of Dundee	96.4	96.5	-0.1
6	The University of Glasgow	95.9	95.8	0.1
7	University of Abertay Dundee	95.4	94.0	1.4
8	Heriot-Watt University	95.2	94.2	1.0
8	The University of St Andrews	95.2	94.8	0.4
10	Edinburgh Napier University	95.0	94.7	0.3
10	Glasgow Caledonian University	95.0	95.3	-0.3
12	The University of the West of Scotland	94.8	95.7	-0.9
13	The University of Aberdeen	94.6	95.7	-1.1
<b>14</b>	<b>The University of Edinburgh</b>	<b>94.3</b>	<b>95.3</b>	<b>-1.0</b>
15	The University of Strathclyde	94.0	94.9	-0.9
16	University of the Highlands and Islands	93.2	94.0	-0.8
17	Glasgow School of Art	91.5	94.2	-2.7
18	SRUC	88.2	93.8	-5.6



### 3. Russell Group

This section compares the results for Russell Group members. The Russell Group average for 2016/17 is 94.7% (this is an estimate calculated using rounded figures provided by HESA).

The grey dots give the benchmark and the dotted line gives the Russell Group average. The difference between the indicator and the benchmark is not statistically significant for any of the institutions in the Russell Group.



Rank	Provider	PI	Benchmark	Difference
1	The University of Liverpool	96.9	95.6	1.3
2	The University of Leeds	96.7	95.2	1.5
3	University of Nottingham	96.6	95.0	1.6
4	The Queen's University of Belfast	96.0	95.4	0.6
5	The University of Glasgow	95.9	95.8	0.1
6	Cardiff University	95.7	95.6	0.1
7	The University of Southampton	95.5	94.9	0.6
8	The University of Birmingham	95.3	94.9	0.4
8	Newcastle University	95.3	95.3	0.0
10	The University of Exeter	95.2	94.8	0.4



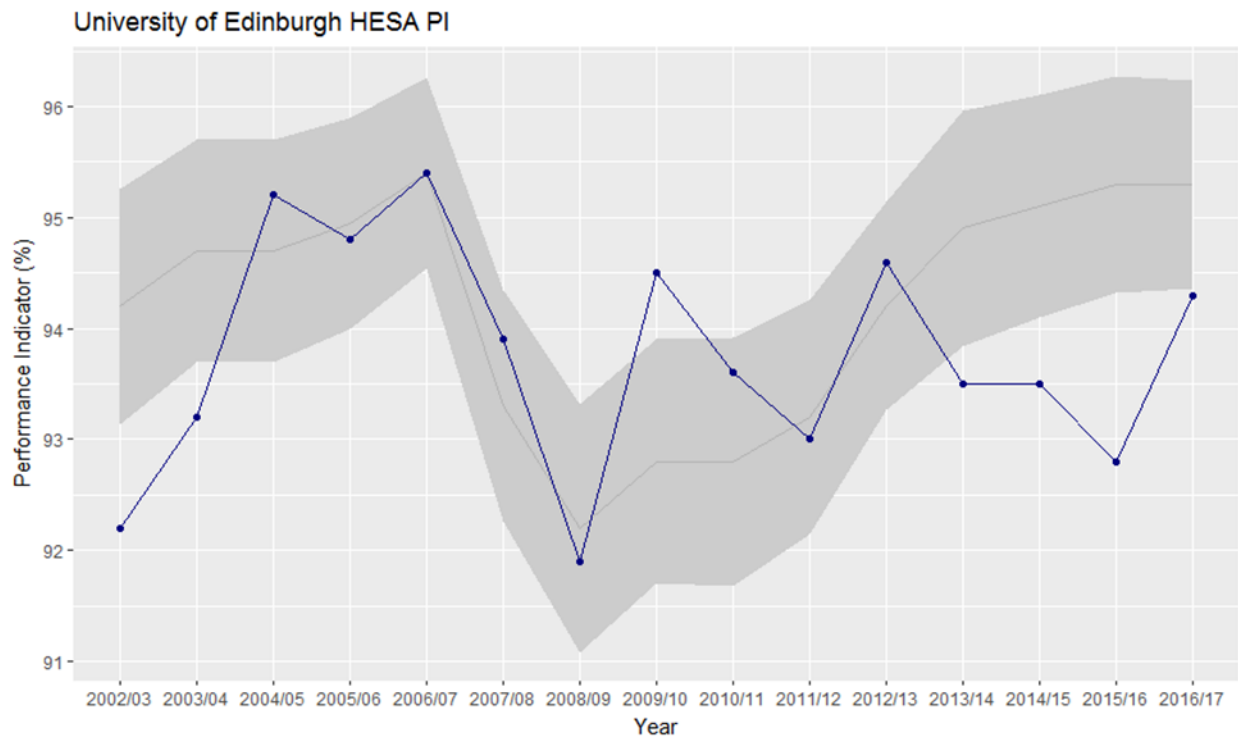
11	The University of Sheffield	95.1	94.9	0.2
<b>12</b>	<b>The University of Edinburgh</b>	<b>94.3</b>	<b>95.3</b>	<b>-1.0</b>
12	The University of York	94.3	94.6	-0.3
14	The University of Manchester	93.6	94.9	-1.3
15	The University of Oxford	93.4	94.3	-0.9
16	King's College London	93.2	95.9	-2.7
16	The University of Warwick	93.2	93.6	-0.4
18	The University of Cambridge	93.1	94.6	-1.5
19	University of Durham	92.7	94.3	-1.6
20	Imperial College of Science, Technology and Medicine	92.6	94.4	-1.8
20	University College London	92.6	94.7	-2.1
22	The University of Bristol	92.5	94.7	-2.2
23	London School of Economics and Political Science	92.4	93.0	-0.6
24	Queen Mary University of London	91.5	93.8	-2.3



#### 4. University of Edinburgh performance over time

This chart shows how the University of Edinburgh has performed compared to its benchmark over time.

The blue points give the actual result for the University of Edinburgh. The grey line indicates the benchmark, and the grey shaded region gives a region two standard deviations around the benchmark. If the indicator is within the grey region then it is not significantly different from the benchmark.



Source: HESA

## 5. Russell Group Trend

The chart below gives the HESA PI and benchmark for each of the Russell Group institutions over time. The red line gives the benchmark and the black line gives the PI.





## 6. Wider Institutional KPIs

This table shows the percentage of full-time first degree UK domiciled graduates in Employment or Further Study (EFS), those in Highly Skilled Employment or Further Study (HSEFS) and the percentage of those entering employment going into highly skilled employment (HSE)<sup>1</sup>, using the same defined population as used to calculate the HESA institutional PI. Data is provided at University and School level<sup>2</sup>. N provides an indication of the size of the population in each case.

Survey	n	EFS	HSEFS	HSE
2016/17	2176	94.3	76.5	75.1
2015/16	2331	92.8	75.0	74.6
2014/15	2124	93.5	72.5	70.8
2013/14	2022	93.5	78.6	79.5
2012/13	2627	94.6	77.5	76.2
2011/12	2481	93.0	74.8	73.7

*See section 9 for an addendum providing comparative institutional performance in HSEFS: the University ranked bottom of the Russell Group and 11<sup>th</sup> on Scotland.*

## 7. School Performance

### 7.1. 2016/17 KPIs by School

This chart shows the percentage of full-time UK domiciled graduates in employment or further study 6 months after graduation (HESA PI) by School. The dotted line gives the overall result for Edinburgh (94.3%).

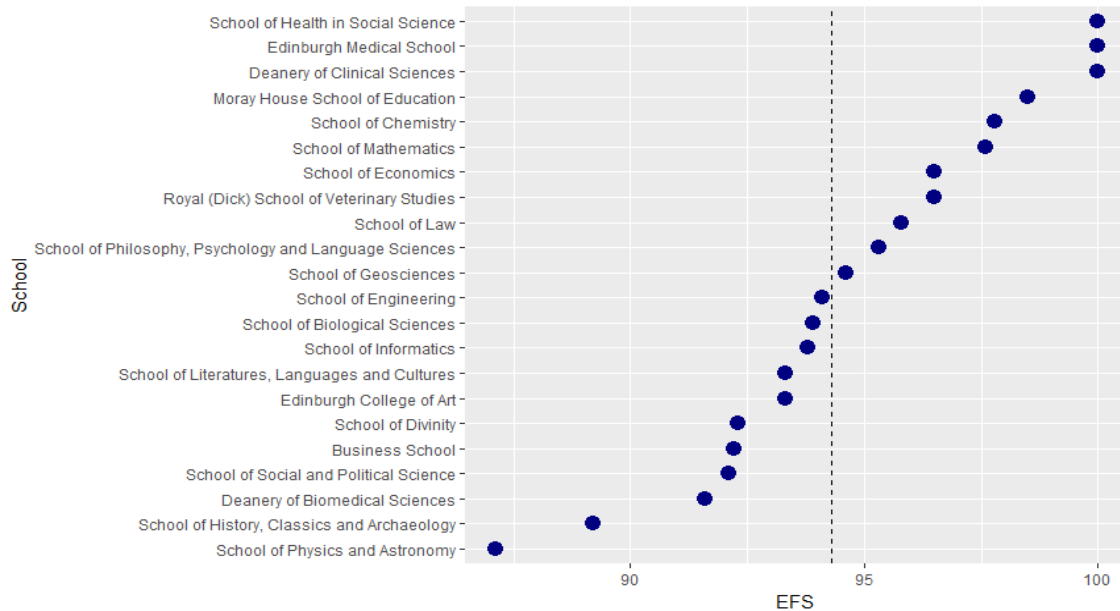
---

<sup>1</sup> The sector wide definition of highly skilled employment is based on Standard Occupational Classification Levels 1-3 i.e. Managers, Directors, Senior Professionals, Professional Occupations and Associate Professional and Technical Occupations.

<sup>2</sup> Comparative data for other institutions is not yet published. An addendum to this report will be provided.



EFS by School 2016/17



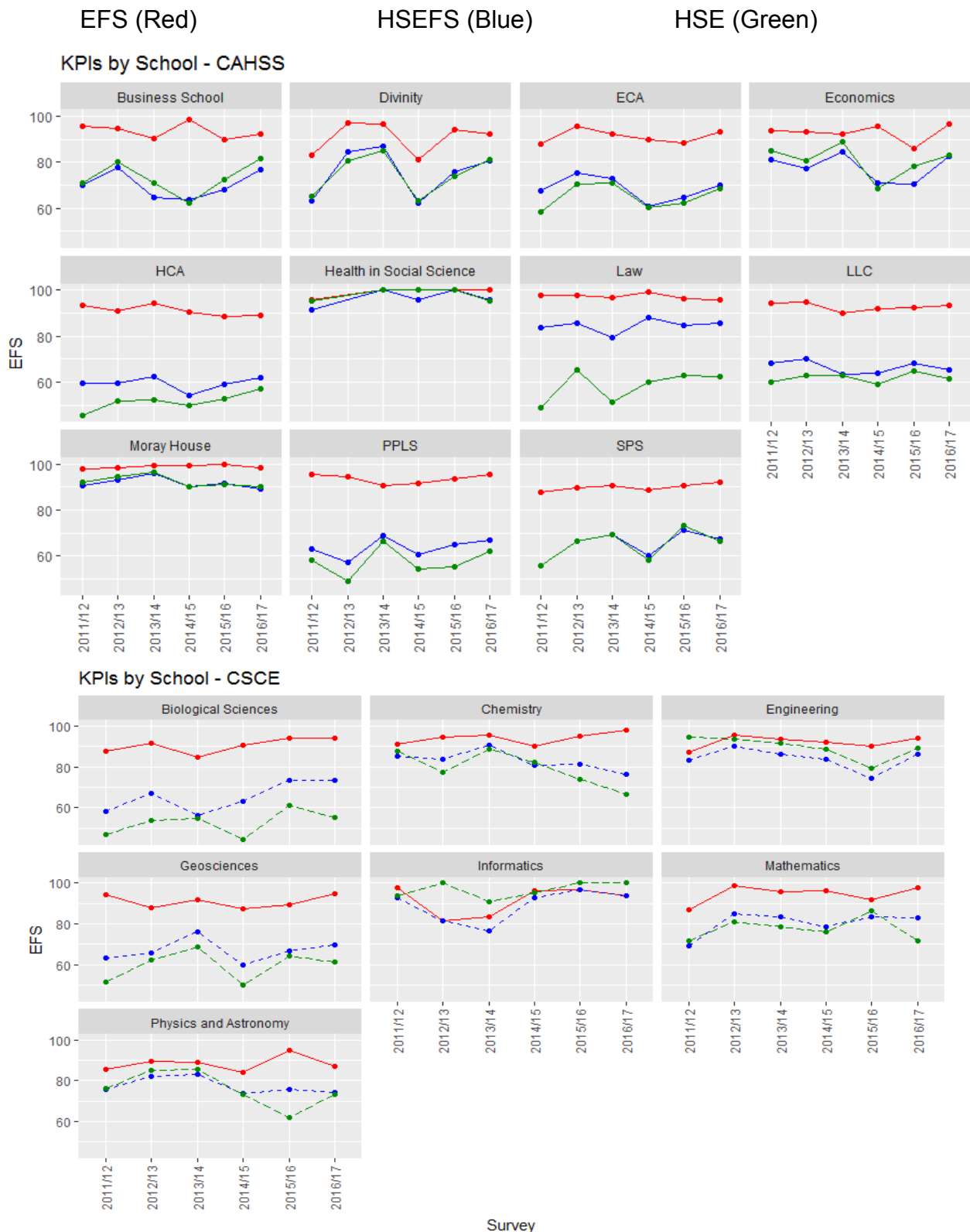
School	n	EFS	HSEFS	HSE
Business School	116	92.2	76.7	81.4
Deanery of Biomedical Sciences	95	91.6	66.3	55.6
Deanery of Clinical Sciences	7	100.0	100.0	100.0
Edinburgh College of Art	225	93.3	70.2	68.5
Edinburgh Medical School	135	100.0	99.3	99.3
Moray House School of Education	204	98.5	89.2	90.2
Royal (Dick) School of Veterinary Studies	57	96.5	94.7	98.1
School of Biological Sciences	82	93.9	73.2	55.3
School of Chemistry	46	97.8	76.1	66.7
School of Divinity	26	92.3	80.8	81.2
School of Economics	57	96.5	82.5	83.0
School of Engineering	101	94.1	86.1	89.3
School of Geosciences	111	94.6	69.4	61.1
School of Health in Social Science	23	100.0	95.7	95.2
School of History, Classics and Archaeology	157	89.2	61.8	57.0
School of Informatics	32	93.8	93.8	100.0
School of Law	120	95.8	85.8	62.5
School of Literatures, Languages and Cultures	238	93.3	65.5	61.6
School of Mathematics	41	97.6	82.9	71.4
School of Philosophy, Psychology and Language Sciences	127	95.3	66.9	62.1
School of Physics and Astronomy	62	87.1	74.2	73.3
School of Social and Political Science	114	92.1	67.5	66.7

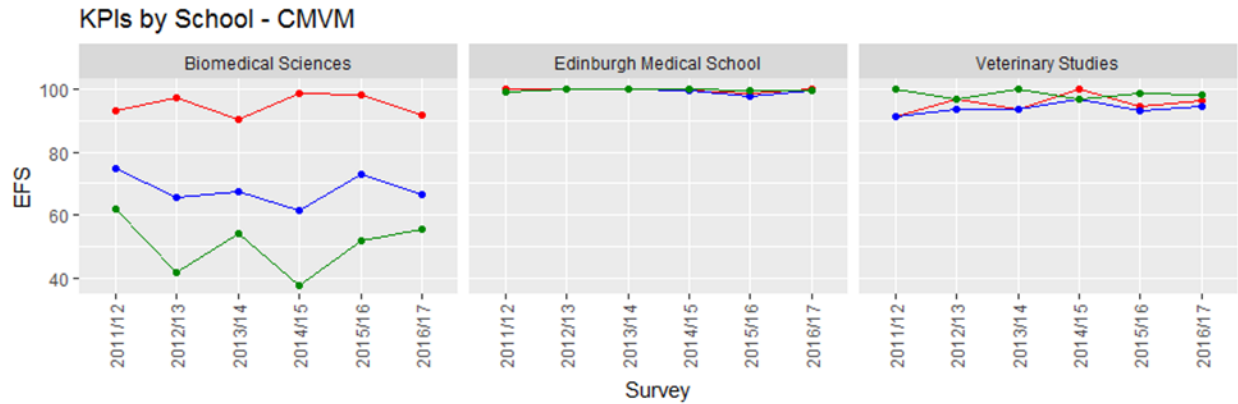




## 7.2 School trends by College

The three charts below show the key performance indicators by School over time.





### 7.3 Three Year Average by School

This table shows the three-year average of the indicators for each School: the percentage of full-time first degree UK domiciled graduates entering employment or further study 6 months after graduation, entering Highly Skilled Employment and Further Study and those going into employment doing so at graduate level.

School	n	EFS	HSEFS	HSE
Business School	304	93.2	70.7	73.3
Deanery of Biomedical Sciences	250	95.4	66.7	49.2
Deanery of Clinical Sciences	21	100.0	95.2	94.7
Edinburgh College of Art	836	90.5	65.1	63.6
Edinburgh Medical School	494	99.1	98.7	99.6
Moray House School of Education	693	99.4	90.4	90.5
Royal (Dick) School of Veterinary Studies	203	96.9	94.8	97.8
School of Biological Sciences	235	93.1	70.6	54.5
School of Chemistry	169	94.0	79.3	74.7
School of Divinity	113	88.5	71.9	72.4
School of Economics	247	91.7	73.9	76.4
School of Engineering	321	92.3	81.9	86.2
School of Geosciences	385	90.5	65.7	59.6
School of Health in Social Science	72	98.6	97.1	98.3
School of History, Classics and Archaeology	584	89.3	58.3	53.2
School of Informatics	99	95.6	94.4	98.6
School of Law	382	97.2	86.2	61.8
School of Literatures, Languages and Cultures	901	92.4	66.0	62.1
School of Mathematics	131	94.9	82.1	78.9
School of Philosophy, Psychology and Language Sciences	461	93.5	64.2	57.4
School of Physics and Astronomy	156	88.7	74.5	69.7
School of Social and Political Science	393	90.6	66.9	66.8



## 8. Performance based on graduate domicile on entry<sup>3</sup>

This table gives the EFS, HSEFS and HSE by domicile on entry for each School.

School	EFS			HSEFS			HSE		
	Scotland	RUK	All	Scotland	RUK	All	Scotland	RUK	All
Biological Sciences	96.6	87.5	95.3	77.6	62.5	81.1	60.7	40.0	60.9
Biomedical Sciences	91.5	91.7	94.2	64.8	70.8	74.6	54.8	58.3	58.5
Business School	95.1	85.3	93.7	73.2	85.3	81.8	73.9	100.0	84.8
Chemistry	100.0	93.8	98.5	76.7	75.0	82.1	63.2	72.7	66.7
Clinical Sciences	100.0	100.0	100.0	100.0	100.0	100.0	100.0	100.0	100.0
Divinity	100.0	89.5	92.3	85.7	78.9	80.8	75.0	83.3	81.2
ECA	91.0	94.9	93.9	66.3	72.8	73.6	63.9	71.2	70.9
Economics	95.2	97.2	95.1	76.2	86.1	82.5	76.5	86.7	81.7
Medical School	100.0	100.0	99.3	100.0	98.4	98.6	100.0	98.3	99.3
Engineering	92.3	100.0	95.5	83.3	95.7	91.0	87.9	94.1	92.7
Geosciences	93.4	96.0	94.4	67.2	72.0	73.2	55.6	66.7	63.4
HCA	85.2	91.7	90.1	45.9	71.9	65.7	31.4	70.8	59.6
H. in Social Science	100.0	100.0	100.0	93.3	100.0	95.7	92.3	100.0	95.2
Informatics	92.9	100.0	93.5	92.9	100.0	93.5	100.0	100.0	100.0
Law	95.4	100.0	96.4	85.2	91.7	87.9	59.3	80.0	67.6
LLC	93.8	93.0	93.7	61.7	67.5	67.5	48.0	67.2	62.8
Mathematics	100.0	95.2	98.2	85.0	81.0	85.7	57.1	78.6	70.8
Moray House	99.4	92.0	98.6	91.6	72.0	88.9	92.0	72.2	89.7
Physics and Astronomy	82.9	92.6	90.2	62.9	88.9	78.0	63.2	90.9	73.7
PPLS	98.4	92.3	95.6	62.9	70.8	70.9	46.3	74.1	64.2
SPS	93.5	90.4	93.6	66.1	69.2	74.3	62.2	71.8	70.5
Veterinary Studies	95.2	97.2	96.1	95.2	94.4	94.8	100.0	97.0	98.6

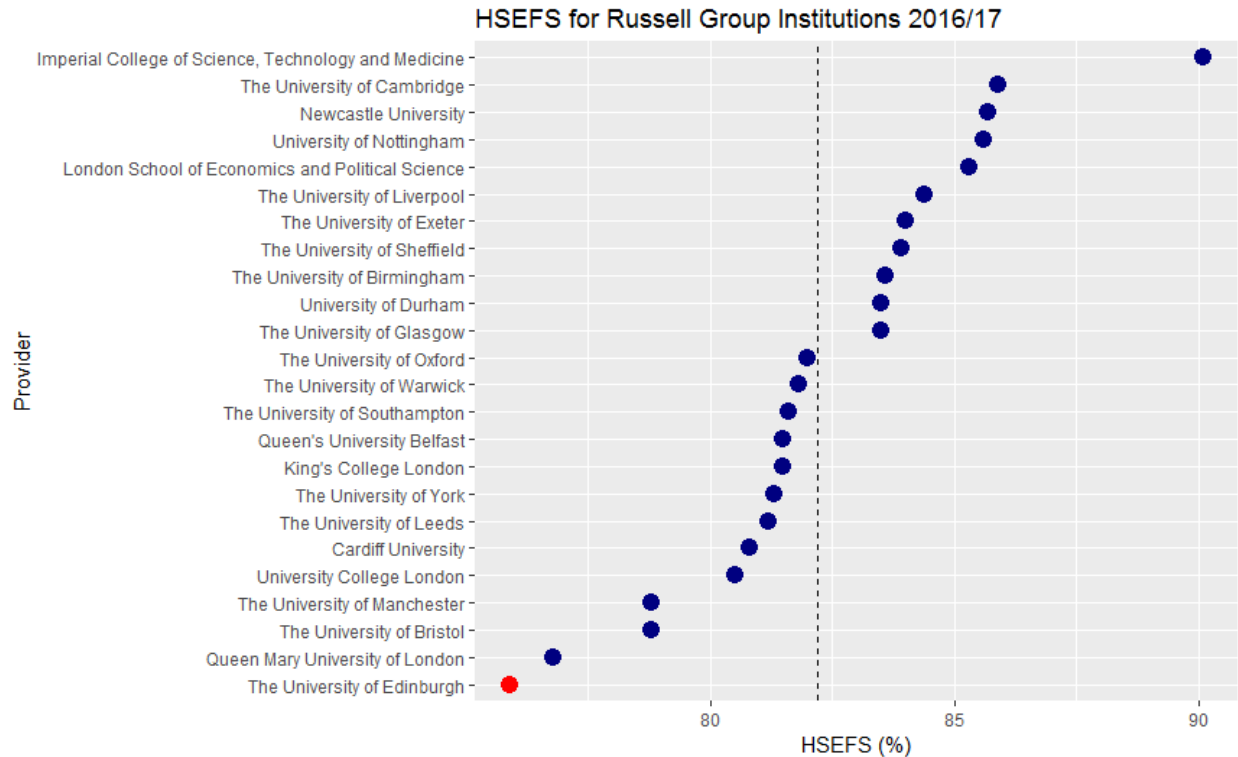
<sup>3</sup> Data for undergraduates from all domiciles is included for reference. Those domiciled outside the UK do not feature in the HESA PI, nor in the TEF and league tables.



## 9. Addendum - HSEFS Sector Comparison

When this report was first produced in early July 2018 data had not yet been published that enabled sector comparison of HSEFS. This data has now been published and is reported below. The University of Edinburgh figure was 75.9%, above the Scottish average of 74.2% but well below the RG average of 82.4%.

### 9.1 Russell Group

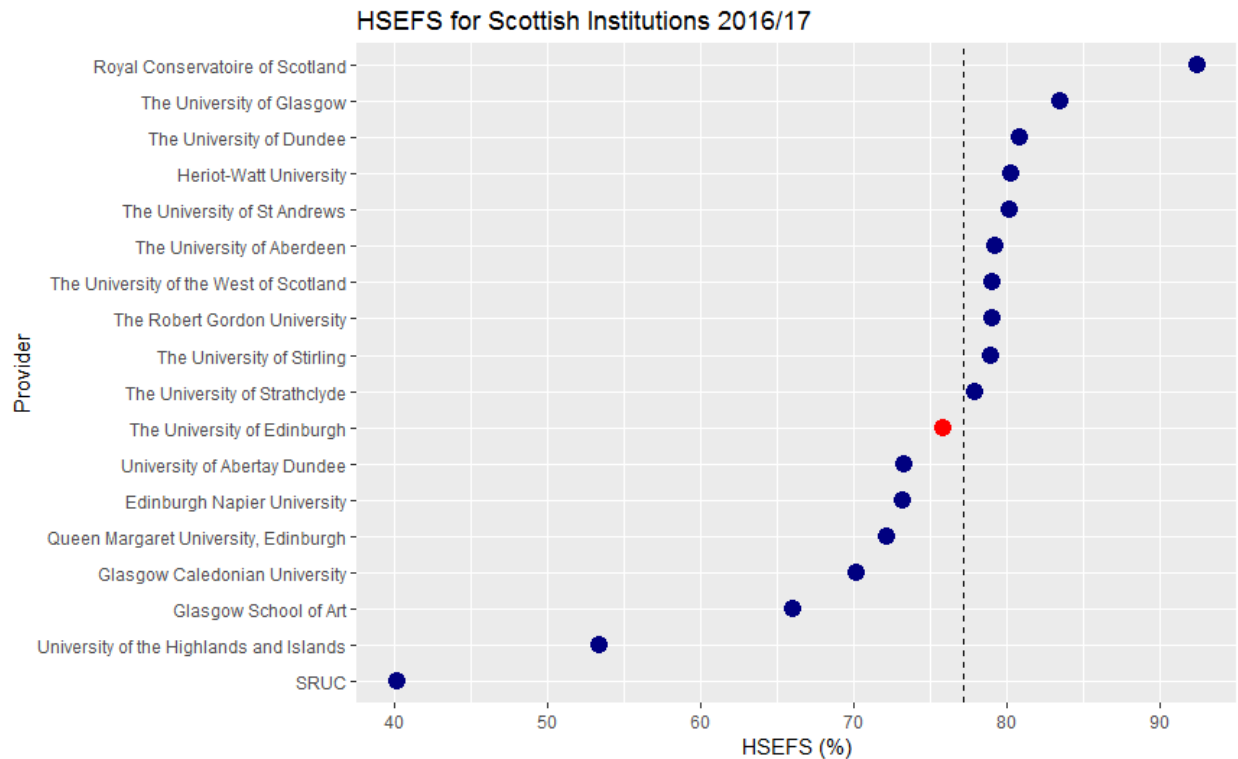


Rank	Provider	Population	HSEFS
1	Imperial College of Science, Technology and Medicine	1146	90.1
2	The University of Cambridge	3464	85.9
3	Newcastle University	3652	85.7
4	University of Nottingham	4808	85.6
5	London School of Economics and Political Science	912	85.3
6	The University of Liverpool	3106	84.4
7	The University of Exeter	3644	84.0
8	The University of Sheffield	3876	83.9
9	The University of Birmingham	4401	83.6
10	The University of Glasgow	2870	83.5
10	University of Durham	3029	83.5



12	The University of Oxford	2926	82.0
13	The University of Warwick	3039	81.8
14	The University of Southampton	3476	81.6
15	King's College London	2301	81.5
15	Queen's University Belfast	3539	81.5
17	The University of York	2568	81.3
18	The University of Leeds	4804	81.2
19	Cardiff University	4139	80.8
20	University College London	2347	80.5
21	The University of Bristol	3028	78.8
21	The University of Manchester	5674	78.8
23	Queen Mary University of London	2293	76.8
<b>24</b>	<b>The University of Edinburgh</b>	<b>3056</b>	<b>75.9</b>

## 9.2 Scotland



Rank	Provider	Population	HSEFS
1	Royal Conservatoire of Scotland	122	92.5
2	The University of Glasgow	2870	83.5



3	The University of Dundee	1511	80.9
4	Heriot-Watt University	1102	80.3
5	The University of St Andrews	937	80.2
6	The University of Aberdeen	1184	79.3
7	The Robert Gordon University	1339	79.1
7	The University of the West of Scotland	1698	79.1
9	The University of Stirling	1694	79.0
10	The University of Strathclyde	2158	77.9
<b>11</b>	<b>The University of Edinburgh</b>	<b>3056</b>	<b>75.9</b>
12	University of Abertay Dundee	584	73.3
13	Edinburgh Napier University	1353	73.2
14	Queen Margaret University, Edinburgh	468	72.2
15	Glasgow Caledonian University	1982	70.2
16	Glasgow School of Art	186	66.1
17	University of the Highlands and Islands	433	53.4
18	SRUC	110	40.2