

# Research Support Office

Asad Nazir – [Asad.Nazir@ed.ac.uk](mailto:Asad.Nazir@ed.ac.uk)



# Outline

- An Introduction to RSO
- Application Process and Support available
- Research Funding Applications
  - Opportunities for Early Career Researchers

# Research Support Office

- Research Development
- Research Support
- EU Team
- Contracts Office (Studentships, MTAs)
- Strategic Research Initiative Team

# RSO: Research Development

- Aims to encourage research funding application activity
  - Promote funding opportunities
  - Arrange funder visits
  - Run workshops, Learning Lunches, Networking events
- Resources:
  - Website <http://www.ed.ac.uk/research-support-office>
  - Blog <http://www.blog.rso.ed.ac.uk/>
  - Research Professional <http://www.researchprofessional.com/>

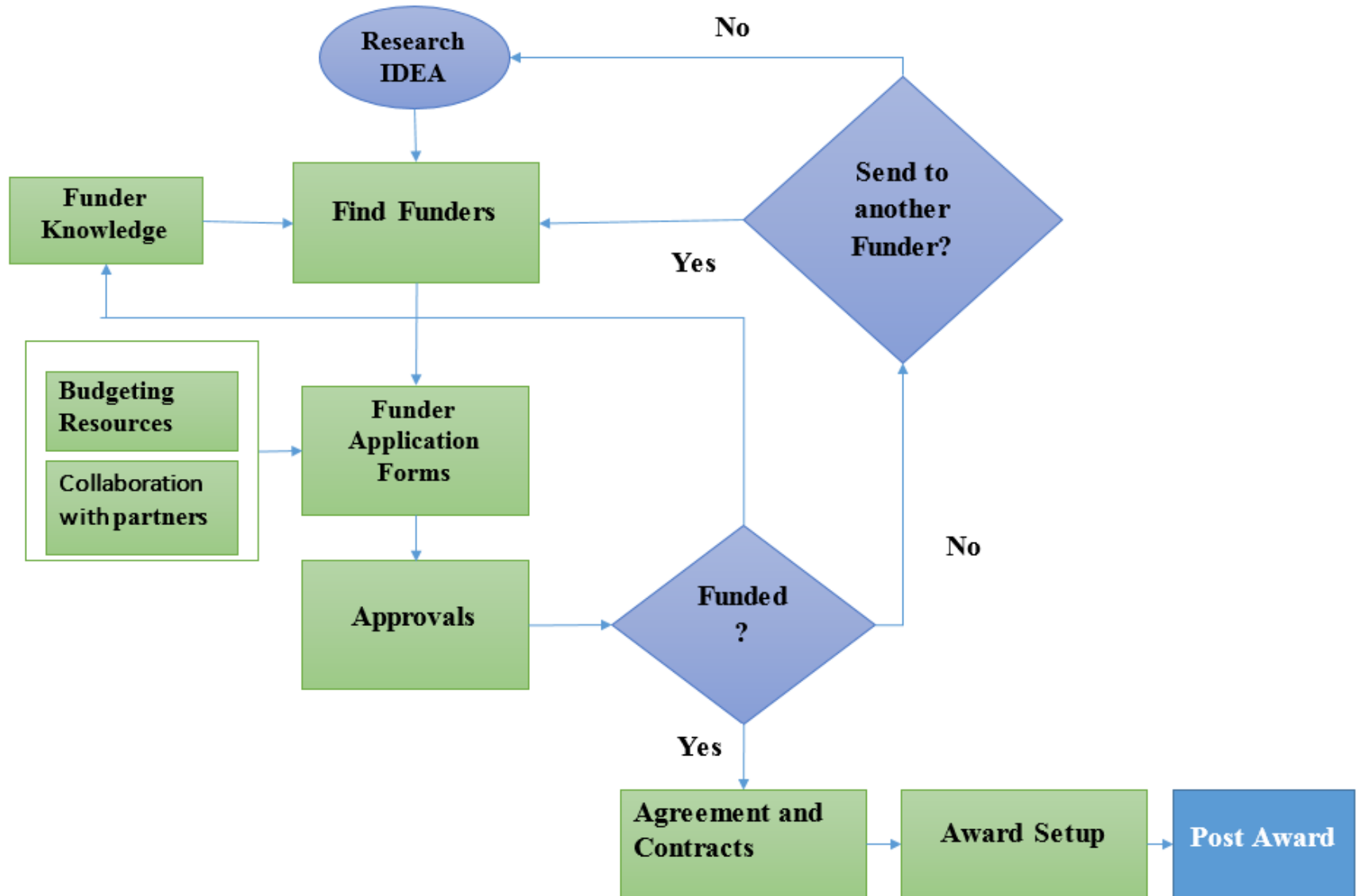
# Proposal Support available

- Funder Information
  - RSO Website: <https://www.ed.ac.uk/research-support-office/funders-and-funding>
  - Research Professional: <https://www.edweb.ed.ac.uk/research-support-office/funders-and-funding/research-professional>
- Dossier of Previously Successful applications
  - RSO Website: <https://www.edweb.ed.ac.uk/research-support-office/toolkit-for-applicants/successful-applications>
- Liaising with collaborators and partners for information
- Workshops and one to one discussions.

# CSE Team

- Janet Ball (Manager) –514 053
- Gordon Marshall (Geosciences and Maths) –Ext 514 386
- Jenny Loukes (SBS) –514 061
- **Asad Nazir (Informatics and Engineering) –509 034**
- Katherine Quinn (Physics, EPCC and Chemistry) –509 032
- Nicola Bell (Chemistry) –514 719
- David Dougal (Engineering) –509 025
- <http://www.ed.ac.uk/research-support-office/about/research-support-cse>

# Funding Processes and Support





# Costing a Proposal

- FEC is Full Economic Cost
  - Directly Incurred Costs
    - Cost that are specific to the research project
    - E.g. RA costs, Travel, consumables etc.
  - Directly Allocated Costs
    - Directly allocated costs are a share of the costs of a resource used by a project, where the same resource is also used by other activities.
    - E.g. Investigator costs, existing facility usage costs
  - Estates costs
    - costs related to buildings and premises used
  - Indirect Costs
    - Research Organisation's management and administrative services
- RSO Website: <https://www.edweb.ed.ac.uk/research-support-office/toolkit-for-applicants/costing-and-pricing>



# FEC rates

- Different funders use different FEC rates
  - Research Councils fund 80% FEC
  - Industrial Funders should be costed at full FEC
- Some Funders have different Rules
  - EC funds 100% DI cost with 25% flat rate Indirect cost
  - US funders differ:
    - NIH funds only 8% Indirect costs
  - Charities normally don't fund any Estates or Indirect costs

# Research Funding Applications

- Opportunities for Early Career Researchers
  - Fellowships
  - Career Starting grants
  - Industrial Collaboration
  - Standard Grants

# Fellowships

- Focus on the researcher
- Research with opportunity to develop skills
- Examples
  - EPSRC Fellowships (Post Doctoral, Early career and Established Career)
    - No deadlines but panels sit twice a year
    - Up to 3 years for post doctoral and 5 years for early career
  - Royal Society University Research Fellowships
    - Usually in September
  - Royal Academy of Engineering Fellowships
- Upcoming Schemes
  - UKRI Future Leadership Fellowship scheme- to be announced next month

# Career Starting Grants

- ERC Starting Grants
  - 2-7 years of experience after PhD (up to Euro 1.5 Million for 5 years)
  - Pioneering frontier research in any field of science, engineering and scholarship
  - Both Researcher and the proposed research are important.
  - More like Fellowship than research grant
- New Investigator Awards
  - Previously called First Grant Scheme
  - New academics, no experience of leading research groups
  - Up to three years

# Industrial Collaboration

- Work with Industry
  - Through projects
    - Through Innovate UK
    - Directly from Industry
  - KTPs (Knowledge Transfer Partnerships)
    - Part funded by Innovate UK and rest by a UK based Industrial organisation
    - Duration between 12 to 36 months
    - Contact your BDE and Amy Taylor [Amy.Taylor@ei.ed.ac.uk](mailto:Amy.Taylor@ei.ed.ac.uk) in Edinburgh Innovation for KTPs and Innovate UK application

# Standard Grants

- Early Career Researchers can be:
  - Researcher Co-Is
  - Co-Investigators (if in an open ended position)

The background features a large, faint watermark of the Edinburgh University crest. The crest is circular and contains a shield with a cross, a book, and a quill. The words "EDINBURGH" are written in a circular path around the shield.

Any Questions?

Asad Nazir

[Asad.Nazir@ed.ac.uk](mailto:Asad.Nazir@ed.ac.uk)

Tel: 0131 650 9034